

FORMCAL® CEMENT POSTERS

APPRECIATING THE BEAUTY OF AESTHETIC CEMENT.

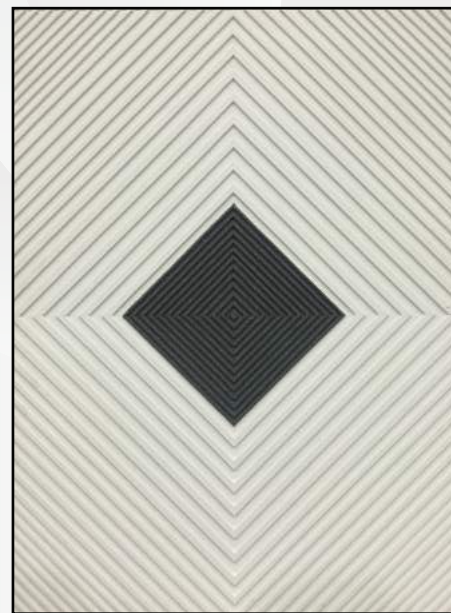
- * Lightweight
- * Easy Installation - Just Hook & Hang!
- * Natural Ingredients - Environmental Friendly & Non-Toxic
- * Water, Fire, Termite & Fungus Resistant
- * Available in White, Black, And Black & White Combinations



CODE : CP01
SIZE : 560 MM X 760 MM X 40 MM
WEIGHT : 8.2 KG



CODE : CP02
SIZE : 600 MM X 860 MM X 40 MM
WEIGHT : 9.5 KG



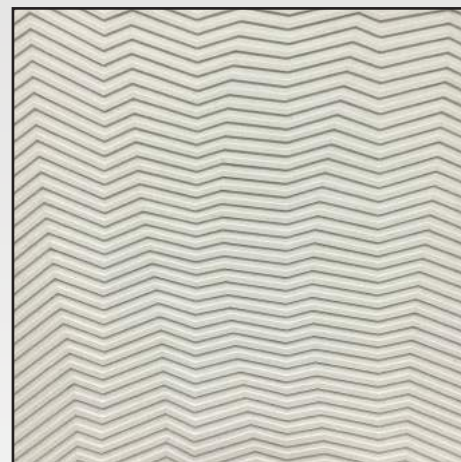
CODE : CP03
SIZE : 560 MM X 760 MM X 45 MM
WEIGHT : 7.5 KG



CODE : CP04
SIZE : 720 MM X 720 MM X 40 MM
WEIGHT : 9.1 KG



CODE : CP05
SIZE : 760 MM X 750 MM X 40 MM
WEIGHT : 9.4 KG



CODE : CP06
SIZE : 670 MM X 680 MM X 40 MM
WEIGHT : 7.6 KG

CONTACT US :

603 - 7859 1395 / 1758

INFO@PIONEERPROCESS.COM

FAX : 603 - 7846 5933

WWW.PIONEERPROCESS.COM

FACEBOOK.COM/PIONEERPROCESS

PIONEER PROCESS

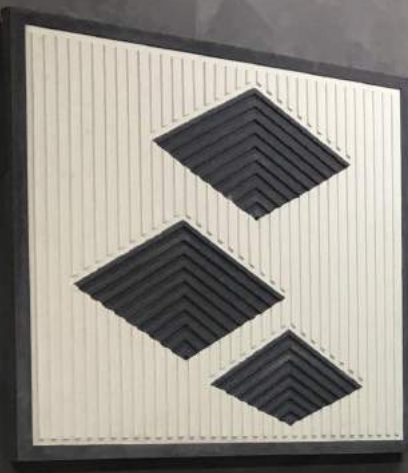
PIONEER PROCESS SDN.BHD.

243, JALAN AIRPORT (JALAN 2A), KG. BARU SUBANG
40150 SHAH ALAM, SELANGOR DARUL EHSAN, MALAYSIA.



FORMCAL® CEMENT POSTERS

APPRECIATING THE BEAUTY OF AESTHETIC CEMENT.



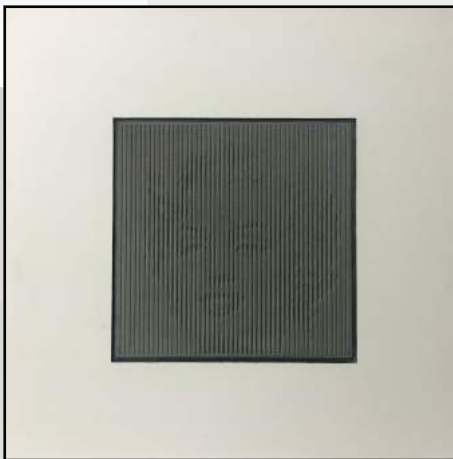
CODE : CP07
SIZE : 430 MM X 640 MM X 35 MM
WEIGHT : 5.4 KG



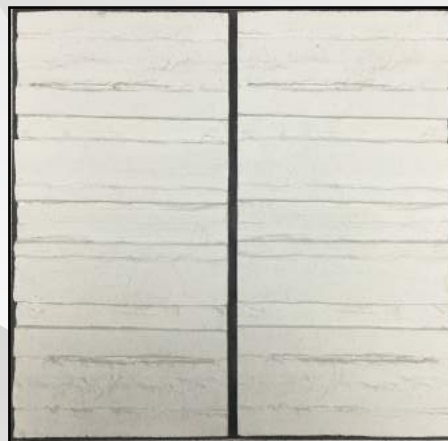
CODE : CP08
SIZE : 500 MM X 700 MM X 40 MM
WEIGHT : 7.2 KG



CODE : CP09
SIZE : 500 MM X 700 MM X 40 MM
WEIGHT : 7.7 KG



CODE : CP10
SIZE : 600 MM X 600 MM X 40 MM
WEIGHT : 5.4 KG



CODE : CP11
SIZE : 550 MM X 530 MM X 40 MM
WEIGHT : 6.5 KG



CODE : CP12
SIZE : 460 MM X 510 MM X 40 MM
WEIGHT : 6.9 KG

CONTACT US :

603 - 7859 1395 / 1758
INFO@PIONEERPROCESS.COM

FAX : 603 - 7846 5933
WWW.PIONEERPROCESS.COM

FACEBOOK.COM/PIONEERPROCESS
PIONEER PROCESS

PIONEER PROCESS SDN.BHD.
243, JALAN AIRPORT (JALAN 2A), KG. BARU SUBANG
40150 SHAH ALAM, SELANGOR DARUL EHSAN, MALAYSIA.

