

This way to
Innovative
Solutions
for Construction

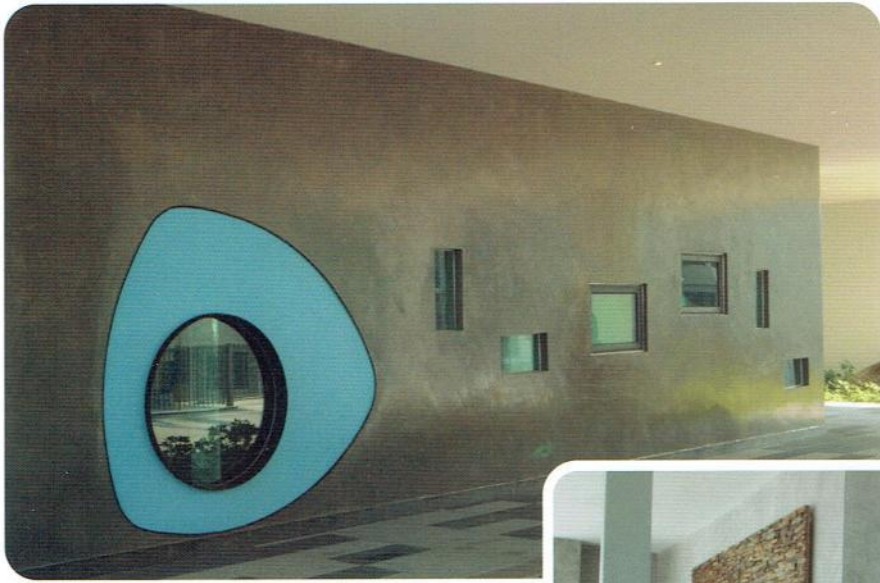


FormCal[®]
Artisan Wall

... pioneer in aesthetic cement

Artisan wall

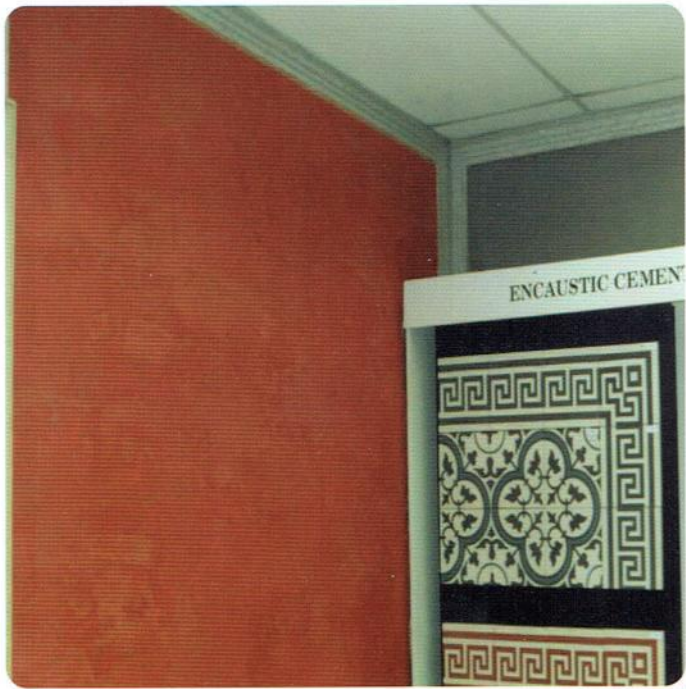
... pioneer in aesthetic cement



Smart, elegant, classy, warm, unique, exquisite, brilliant, passionate, beautiful, creative, artistic, opulent.....

These are among the adjectives most fit to describe a FormCal Artisan wall.

This innovative wall is made from a combination of special cement, flexible polymer, fine fillers and other proprietary additives. Its versatility to bond with many substrates such as concrete, cement, fibreboards, plywood, gypsum etc. makes it a very viable choice in wall solutions towards contemporary design.



Formal Artisan Wall is a thin-bed aesthetic cement skim render wall finishing system. The fast drying property of the material in combination with the troweling technique creates different degree of visual impact on the finished wall. The material can be layered intensively for a strong contrasting effect or lightly for a gentle ambiance. The choice is solely individual and each piece of work is unique in itself.



.... pioneer in aesthetic cement



- ▶ High quality aesthetic cement thin-bed skim render
- ▶ Fast drying + thin layer troweling creates unique finishing effect
- ▶ From gentle to strong shading appearance
- ▶ Seamless and elegant
- ▶ Smooth or mild textured surface
- ▶ Choice of many colour shades
- ▶ Can apply on concrete, cement, fibre boards plywood and gypsum substrates.
- ▶ Hard wearing surface and durable
- ▶ Hardened surface is stable and tension free
- ▶ Breathable and allow water vapour from substrate to escape
- ▶ Wall sealed with FormCal stone oil and Nano Wax for easy maintenance

NB: Product is not suitable for external applications and in areas that are subjected to constant exposure to moisture.

FORMCAL® ARTISAN WALL

NEW COLOUR CHART!!



THE NEW GREY



AW-G1 - IVORY GREY



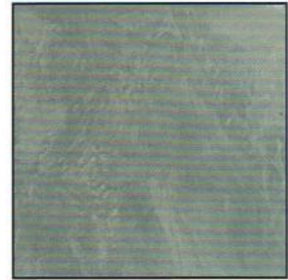
AW-G2 - CEMENT GREY



AW-G3 LIGHT GREY



AW-G4 ASH GREY



AW-G5 DIM GREY



AW-G6 SHADOW GREY



AW-G7 HAZEY GREY



AW-G8 SATIN GREY

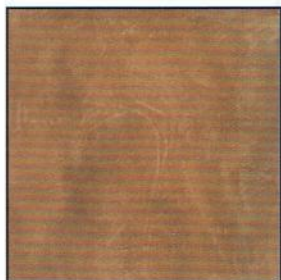


AW-G9 GRAPHITE GREY



AW-G10 BLACK

THE NEW BROWN



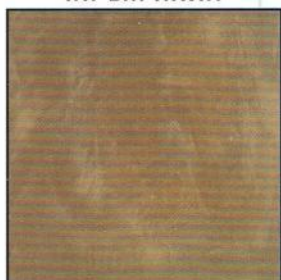
AW-BR1 TAWNY



AW-BR2 CINNAMON



AW-BR3 TROPICAL WOOD



AW-BR4 PEANUT

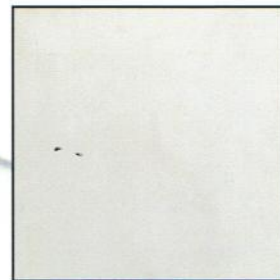


AW-BR5 COFFEE

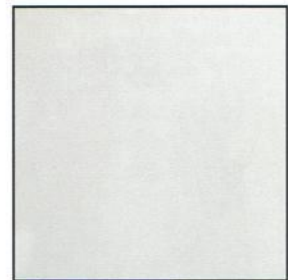


AW-BR6 WALNUT

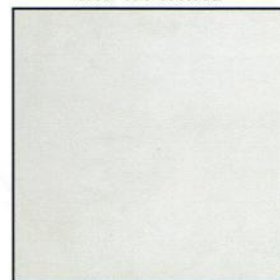
THE NEW WHITE



AW-W1 WHITE



AW-W2 COOL WHITE



AW-W3 WARM WHITE

**IMAGES ABOVE ARE FOR ILLUSTRATION PURPOSE ONLY. KINDLY VIEW SAMPLES FOR ACTUAL COLOURS.

CONTACT US NOW !!

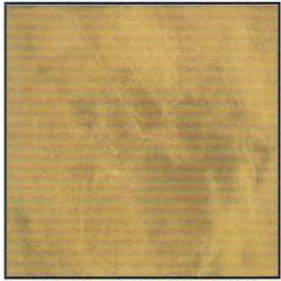
TEL : 603 - 7859 1395/1758
EMAIL : INFO@PIONEERPROCESS.COM

FAX : 603 - 7846 5933
WEBSITE : WWW.PIONEERPROCESS.COM

PIONEER PROCESS SDN.BHD.
243, JALAN AIRPORT (JALAN 2A), KG.BARU SUBANG
40150 SHAH ALAM, SELANGOR DARUL EHSAN, MALAYSIA.



THE NEW YELLOW



AW-Y1 MAIZE YELLOW



AW-Y2 LEMON YELLOW



AW-Y3 PALE YELLOW



AW-Y4 WHEAT YELLOW



AW-Y5 EARTH YELLOW



AW-Y6 BRIGHT YELLOW

THE NEW ORANGE



AW-OR1 TANGERINE

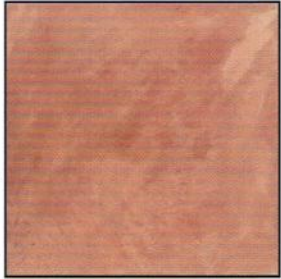


AW-OR2 ORANGE



AW-OR3 BURNT ORANGE

THE NEW RED



AW-R1 WINE RED



AW-R2 EARTH RED



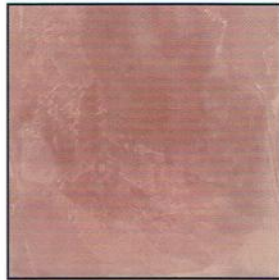
AW-R3 ROSE RED



AW-R4 CHERRY RED

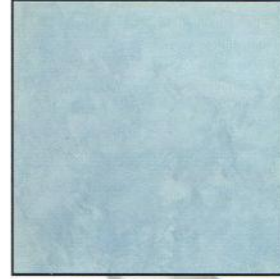


AW-R5 CRIMSON RED



AW-B6 MAGENTA

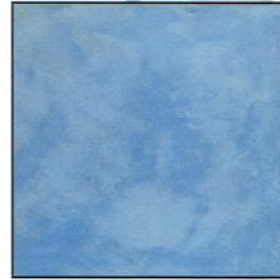
THE NEW BLUE



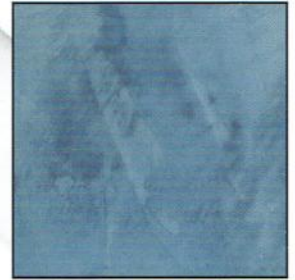
AW-B1 LIGHT BLUE



AW-B2 SKY BLUE



AW-B3 AQUA BLUE



AW-B4 COBALT BLUE

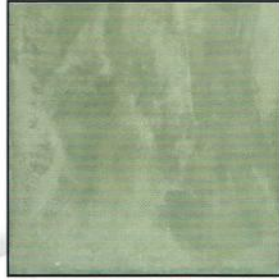
THE NEW GREEN



AW-GN1 LIME GREEN



AW-GN2 GRASS GREEN



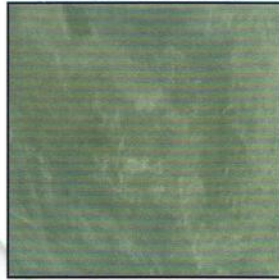
AW-GN3 PALE GREEN



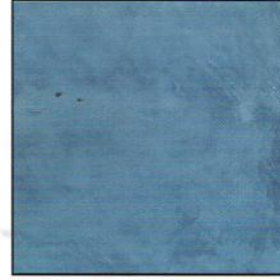
AW-GN4 OLIVE GREEN



AW-GN5 APPLE GREEN



AW-GN6 HUNTER GREEN



AW-B5 NAVY BLUE



AW-B6 JEAN BLUE

**IMAGES ABOVE ARE FOR ILLUSTRATION PURPOSE ONLY.
KINDLY VIEW SAMPLES FOR ACTUAL COLOURS.

CONTACT US NOW !!

TEL : 603 - 7859 1395/1758
EMAIL : INFO@PIONEERPROCESS.COM

FAX : 603 - 7846 5933
WEBSITE : WWW.PIONEERPROCESS.COM

PIONEER PROCESS SDN.BHD.
243, JALAN AIRPORT (JALAN 2A), KG.BARU SUBANG
40150 SHAH ALAM, SELANGOR DARUL EHSAN, MALAYSIA.

